



A38 SHIP CONCERT HALL LIGHTS 2024

LOCATION	A38 Ship - Budapest
ADDRESS	H-1117 Henryk Slawik lower quay (Petőfi Bridge Buda side) https://goo.gl/maps/D6ucj6RkCjxkJ3mbA
WEBSITE	http://www.a38.hu
TECH INFOS	https://www.a38.hu/en/stagecraft
TECH CONTACTS	Barnabás barnabas at a38.hu Tamás Vörös voros.tamas-at-a38.hu

PROHIBITED	Use of pyrotechnics, confetti, silly strings of any kind.
MAX SOUND LEVEL	105 dB SPL next to FOH mixer
STAGE	11,6 x 5,8 x 0,9 m (38' x 19' x 2,9') clearance: 2,7m (8,8')
CONCERT HALL	including stage: 11,6 x 25,8 x 4m (38'x 84,6' x 13,12')
POWER SUPPLY	Besides our usual power supply sound&light of house: 3x32A on stage.

We ask you not to put any gear on stage until the house technicians arrive!










BACK DROP	Black curtain along the whole width of the stage. If Artist brings their own backdrop, a fire safety certificate must be sent in advance a week prior to show to the production department, otherwise, the backdrop cannot be used.
-----------	---

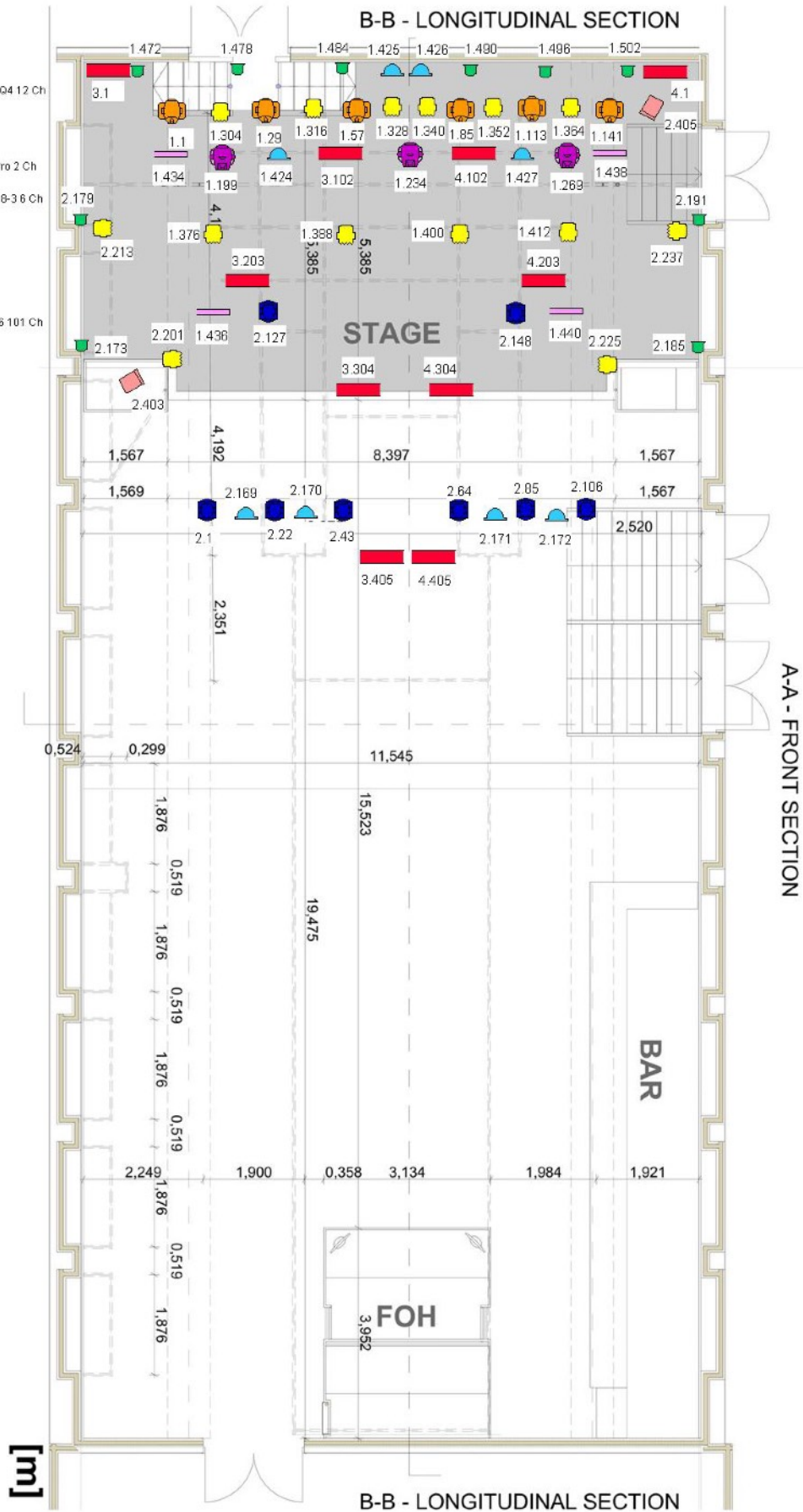
If Artist will use the light controller of A38, but also brings additional lamps, the representative of the Artist must send the exact list of the lamps with the patch list as well in advance two weeks prior to show date.



Light Desk: Avolites Pearl Expert Pro Update + Touch Wing (Titan version: 14.0)		
Node: NA Company		
Art-NET protocol:		IP: 2.0.0.1.
		Subnet mask: 255.255.255.0.
		Default gateway: 192.168.0.1.
Patch	Type	Channels
Line 1		
1.1	Cameo Azor S2	28 channels
1.29	Cameo Azor S2	
1.57	Cameo Azor S2	
1.85	Cameo Azor S2	
1.113	Cameo Azor S2	
1.141	Cameo Azor S2	
1.199	A.leda B-Eye K10	35 channels (Shapes mode)
1.234	A.leda B-Eye K10	
1.269	A.leda B-Eye K10	
1.304	Showtec Spectral M1500 Q4	12 channels (Tour mode)
1.316	Showtec Spectral M1500 Q4	
1.328	Showtec Spectral M1500 Q4	
1.340	Showtec Spectral M1500 Q4	
1.352	Showtec Spectral M1500 Q4	
1.364	Showtec Spectral M1500 Q4	
1.376	Showtec Spectral M1500 Q4	
1.388	Showtec Spectral M1500 Q4	
1.400	Showtec Spectral M1500 Q4	
1.412	Showtec Spectral M1500 Q4	
1.424	2 Mole Blinder	
1.425	2 Mole Blinder	
1.426	2 Mole Blinder	
1.427	2 Mole Blinder	
1.434	Hungaroflash EUDMX Pro	2 channels
1.436	Hungaroflash EUDMX Pro	
1.438	Hungaroflash EUDMX Pro	
1.440	Hungaroflash EUDMX Pro	
1.472	Showtec Cameleon Spot 18-3	6 channels
1.478	Showtec Cameleon Spot 18-3	
1.484	Showtec Cameleon Spot 18-3	
1.490	Showtec Cameleon Spot 18-3	
1.496	Showtec Cameleon Spot 18-3	
1.502	Showtec Cameleon Spot 18-3	

Line 2		
2.1	Clay Paky Mini-B	21 channels (Extended RGBW)
2.22	Clay Paky Mini-B	
2.43	Clay Paky Mini-B	
2.64	Clay Paky Mini-B	
2.85	Clay Paky Mini-B	
2.106	Clay Paky Mini-B	
2.127	Clay Paky Mini-B	
2.148	Clay Paky Mini-B	
2.169	2 Mole Blinder	
2.170	2 Mole Blinder	
2.171	2 Mole Blinder	
2.172	2 Mole Blinder	
2.173	Showtec Cameleon Spot 18-3	6 channels
2.179	Showtec Cameleon Spot 18-3	
2.185	Showtec Cameleon Spot 18-3	
2.191	Showtec Cameleon Spot 18-3	
2.201	Showtec Spectral M1500 Q4	12 channels (Tour mode)
2.213	Showtec Spectral M1500 Q4	
2.225	Showtec Spectral M1500 Q4	
2.237	Showtec Spectral M1500 Q4	
2.403	Unique 2.1 Hazer	
2.405	Unique 2.1 Hazer	
Line 3		
3.1	Showtec Pixelbar 16Q6	101 channels
3.102	Showtec Pixelbar 16Q6	
3.203	Showtec Pixelbar 16Q6	
3.304	Showtec Pixelbar 16Q6	
3.405	Showtec Pixelbar 16Q6	
Line 4		
4.1	Showtec Pixelbar 16Q6	101 channels
4.102	Showtec Pixelbar 16Q6	
4.203	Showtec Pixelbar 16Q6	
4.304	Showtec Pixelbar 16Q6	
4.405	Showtec Pixelbar 16Q6	

-  Cameo Azor S2 28 Ch
-  Aleda B-Eye K10 33 Ch
-  Showtec Spectral M1 500 Q4 12 Ch
-  2 Mole Blinder
-  Hungaroflash EUDMX Pro 2 Ch
-  Showtec Cameleon Spot 18-3 6 Ch
-  Clay Paky Mini-B 21 Ch
-  Unique 2.1 Hazer 2 Ch
-  Showtec Pixelbar 1806 101 Ch



[m]